



EN Quick guide - Wireless thermostat & receiver

Wireless thermostat type DE
Surface-mounted receiver
Socket receiver

Contents


1	Putting the wireless thermostat into operation	3
1.1	Set time and date.....	3
2	Wireless assignment.....	4
2.1	Switching the surface-mounted receiver to assignment mode.	4
2.2	Switch socket receiver to assignment mode	4
2.3	Wireless thermostat assignment	5
3	Setting the target temperatures	6
3.1	Set comfort setpoint (day).....	6
3.2	Set economy set point (night)	6
4	Set economy set point (night).....	7

These brief instructions for commissioning and establishing the connection between the DE wireless thermostat and the surface-mounted receiver and the socket receiver do not replace the operating instructions for the corresponding devices.

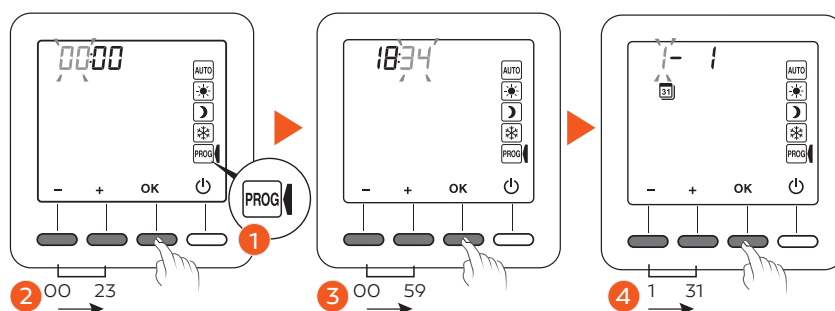
Always consult the respective manual in addition and be sure to observe the safety instructions listed there.

The electrical connection of the receiver to a Welltherm infrared heating system is assumed for these brief instructions.

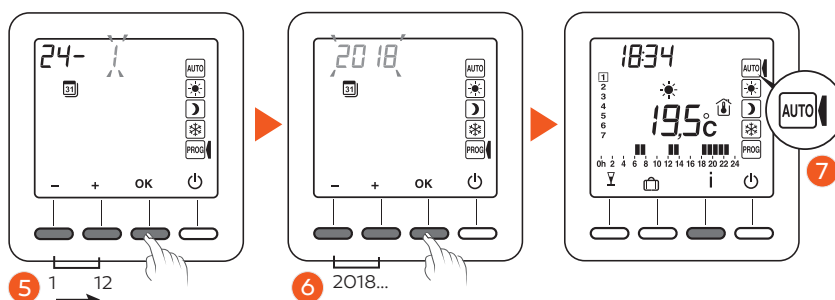
1 - Putting the wireless thermostat into operation

- Insert 2 x AAA batteries (1.5 V) into the thermostat according to the operating instructions.
- Press the right, of the four display keys (below the symbol ) to switch on the thermostat.

1.1 Set time and date

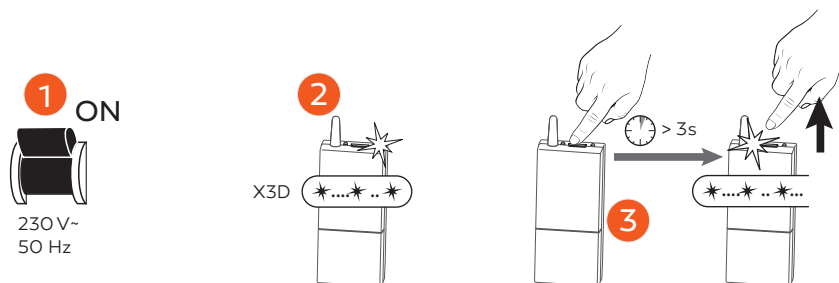


- 1 Use the rotary control to select the PROG function.
- 2 Set the hour with the +/- keys and confirm with OK.
- 3 Set the minutes with the +/- keys keys and confirm with OK.
- 4 Set the day with the +/- keys buttons and confirm with OK.
- 5 Set the month with the +/- keys and confirm with OK.
- 6 Set the year with the +/- keys keys and confirm with OK.
- 7 Use the rotary control to select the AUTO function to exit the mode.



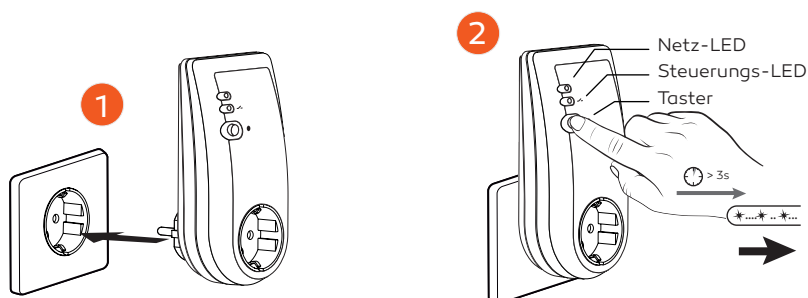
2 - assignment

2.1 Surface-mounted receiver switch to assignment mode



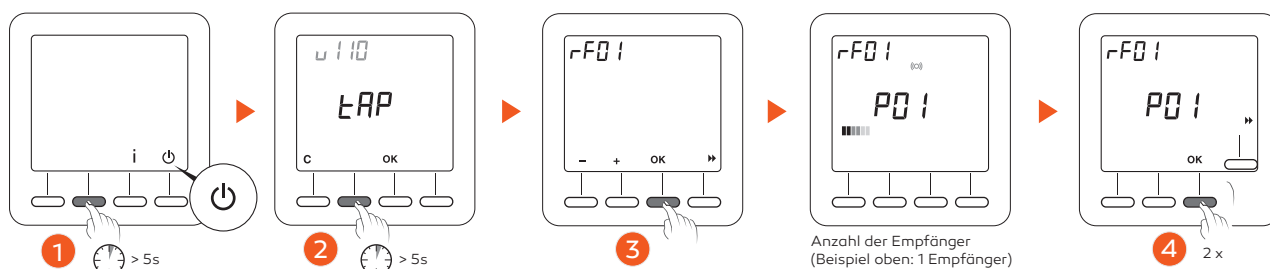
- 1 Switch on the power supply of the surface-mounted receiver.
- 2 Wait until the control LED flashes 3 times.
- 3 Press the button of the surface-mounted receiver for 3 seconds until its control LED flashes. Then release the button. Carry out the following assignment on the thermostat (see point 2.3).

2.2 Socket receiver switch to assignment mode



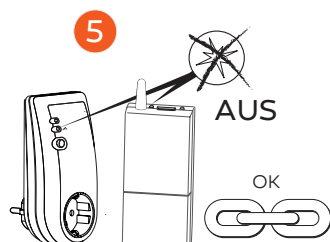
- 1 Plug the socket receiver into a suitable socket. When the power supply is correct, the power LED lights up.
- 2 Press the button of the socket receiver for 3 seconds until its control LED flashes. Then release the button. Carry out the following assignment on the thermostat (see point 2.3).

2.3 thermostat assignment



The thermostat must be switched off.

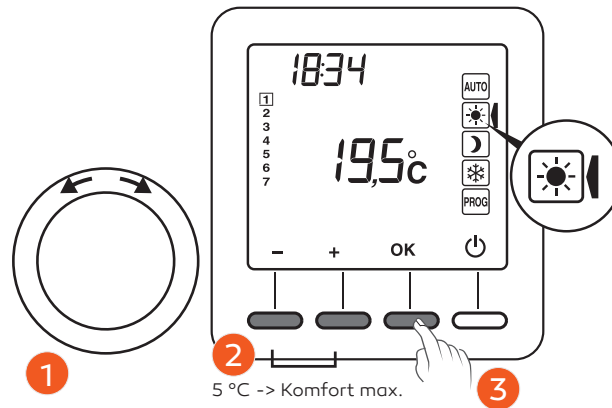
- 1 Press the 2nd key from the left for 5 seconds. The display shows the thermostat version (example: u110).
- 2 Press the 2nd key from the left again for 5 seconds. The menu „rFO1“ appears on the display.
- 3 Press OK.
The thermostat searches for unassigned receivers. The number of receivers found appears in the center of the display.
- 4 Press OK 1 x per receiver for the receiver assignment and then additionally 2 x with the OK button to confirm.
- 5 Make sure that the control LED on the receiver now stops flashing.
The devices are now connected to each other and thus the assignment is completed.



3 - Setting the target temperatures

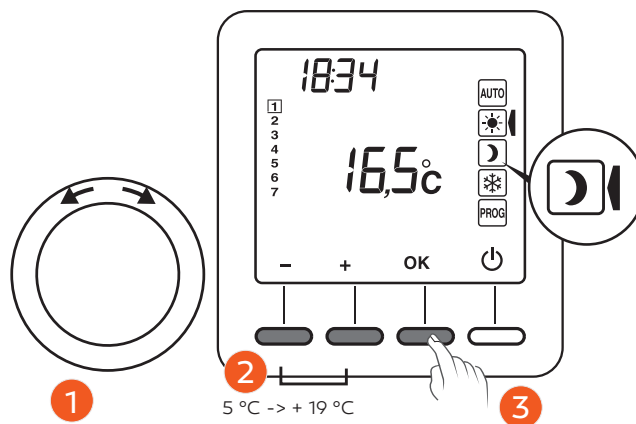
If the thermostat is switched off, switch on the device.

3.1 Set comfort setpoint (day)



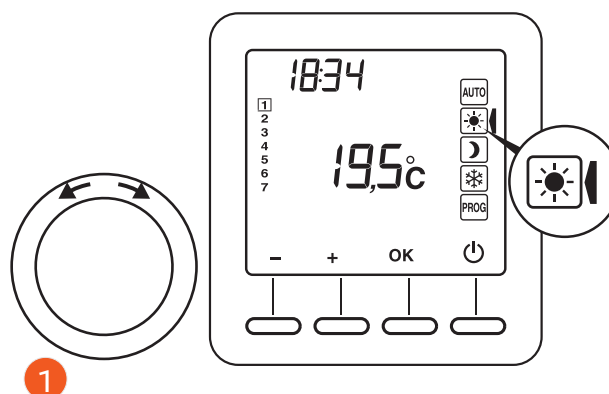
- 1 Use the rotary control to select the function ☀️.
- 2 Set the desired comfort temperature with the +/- keys buttons (from 5 °C to max. comfort temperature).
- 3 Confirm with OK.

3.2 Set economy set point (night)



- 1 Use the rotary control to select the function 🌙.
- 2 Set the desired setback temperature using the +/- keys. (from 5 °C to 19 °C).
- 3 Confirm with OK.

4 - Change operating mode



- 1 Use the rotary control to select the desired function ☀ or 🌙.

If the current temperature differs from the previously set setpoint of the operating mode, you will hear a soft 'clack' sound from the receiver, which indicates that the command has been received and the infrared heater has been switched off or on.

At the same time, the control light of the receiver flashes 3 times.

This quick start guide is intended to provide you with a quick and uncomplicated introduction. For this reason, the scope is deliberately reduced to the wireless assignment and the basic control via day and night program. In addition, the Welltherm control system offers you further detailed settings and comfort features such as the automatic function with weekly timer, the integration of an opening detector or the app control via smartphone. In addition, please read the detailed operating instructions for the respective control components.

Welltherm GmbH
Wibschla 22
58513 Lüdenscheid

t +49 (0) 2351 / 981 622-60
f +49 (0) 2351 / 981 622-66

sales@welltherm.de
www.welltherm.de